

Installation of TT's FabWorks Steering Cross Brace



DISCLAIMER FOR OFF ROAD USE ONLY

THE PURCHASER IS RESPONSIBLE FOR DETERMINING THE SUITABILITY OF ANY AND ALL PRODUCTS PURCHASED

Purchaser understands and recognizes that off road and racing equipment and services provided by manufactured and/or sold by Distributor are subject to varied conditions due to the manner in which they are to be installed and used. Purchaser further recognizes and agrees that suitability of any part sold or manufactured for a particular application is the purchaser's decision and that the purchaser is not relying on the skill or judgment of manufactured and/or Distributor regarding suitability of any product or service.

Manufacturer and Distributor make no warranties whatsoever, expressed or implied, oral or written to purchasers with regard to off road and racing equipment. The right to make changes in design or add to or improve on product without incurring any obligations to install the same on products previously manufactured is expressly reserved.

Buyer agrees to indemnify and hold seller harmless from any claim, action or demand arising out of or incident to the buyer's installation or use of products purchased from Manufacturer and/or Distributor.

All parts are aftermarket replacement parts. No implication is made that these parts are the original car manufacturers', are from the original suppliers, or are approved by them.

Before operating vehicle, always utilize safety restrain systems while operating vehicle.

Warranty & Returns

Please note all products are designed for off road use only. It is up to the user and/or installer to determine fitness for any other application. Manufacturer can't control the severity of off road terrain, your driving habits, and the quality of your installation and offers no warranty as to fitness or performance for a particular application. Many of our products require fabrication skills to install and should only be installed by a qualified fabricator or mechanic. All products carry a one year warranty however only products that have abnormal defects or workmanship can be returned. Parts that have been abused, incorrectly installed, modified, or damaged cannot be returned. Please contact us before returning any parts. No claims will be accepted on parts that have been modified in any way. Warranty is limited to replacement of defective parts only and does not cover labor or shipping costs, vehicle down time or any other losses on your behalf.

WARNING

Installation of any component or kit should only be performed by persons experienced in the installation and proper operating of vehicle systems. It is also the responsibility of the person installing any component or kit to determine the suitability of the components or kit for that particular application. Products are intended for off road use only. The manufacturer and distributor are not responsible for any misuse of these products. Check with your local authorities for highway laws in your area because highway laws and the enforcement of those laws vary widely.

Please check with your local DMV or vehicle department for regulations and information, manufacturer and distributor is not responsible for any legal issues regarding of any product you purchase here.

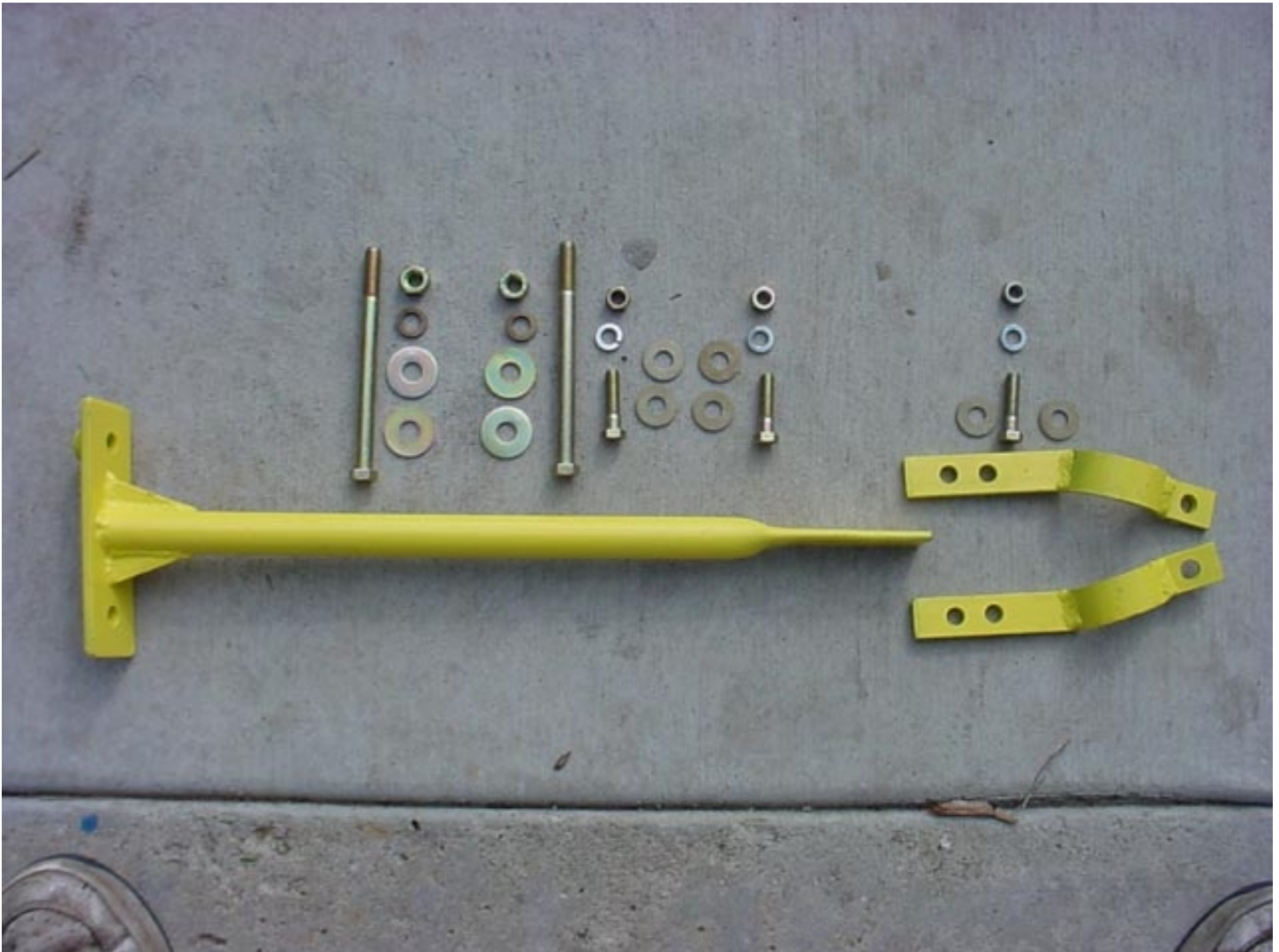
Installation of TT's FabWorks Steering Cross Brace

HARDWARE INCLUDED:

MAIN X BRACE SUPPORT ARM
2-PIECE STEERING BOX CLAMP

- 2 GRADE 8 7/16X5.5" BOLTS
- 4 7/16" FLAT WASHERS
- 2 7/16" LOCK WASHERS
- 2 7/16" GRADE 8 NUTS

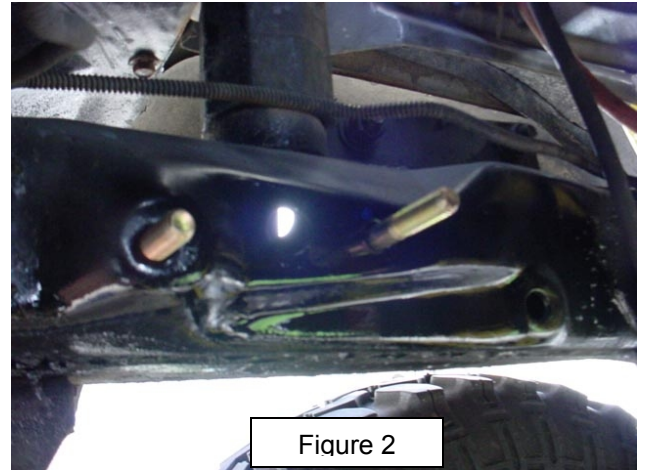
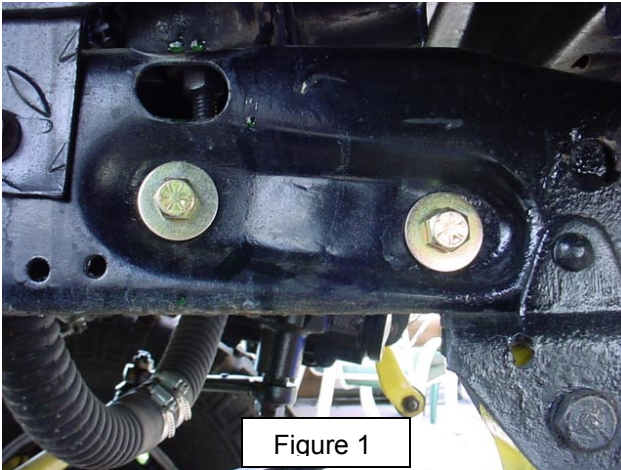
- 3 GRADE 8 3/8X1.25" BOLTS
- 6 3/8" FLAT WASHERS
- 3 3/8" LOCK WASHERS
- 3 3/8" GRADE 8 NUTS



Installation of TT's FabWorks Steering Cross Brace

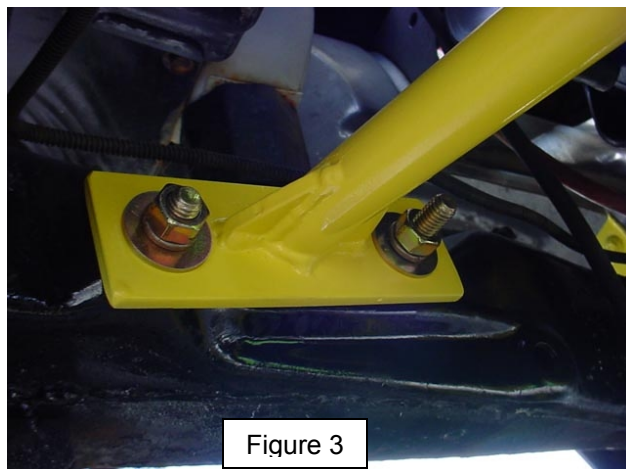
ASSEMBLY:

1. Install (2) Grade 8 7/16x5.5" bolts and (2) flat washers through the passenger side frame rail as shown in Figure 1 and Figure 2:



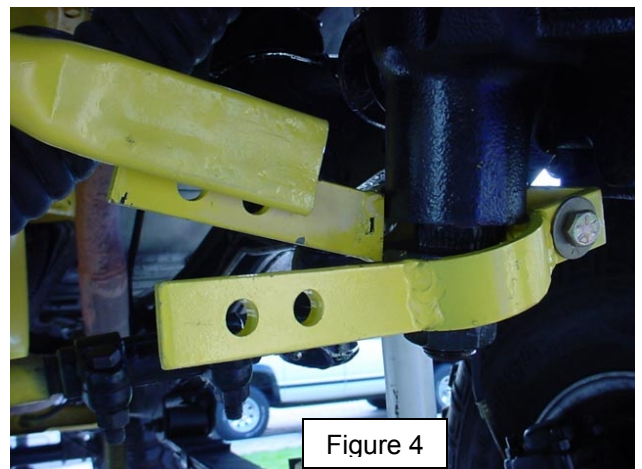
2. Place MAIN SUPPORT on inside of frame rail over 7/16" bolts. Install (2) flat washers, (2) Lock washers and (2) 7/16" nuts hand-tight. (Figure 3)

Now tighten forward bolt first to 50 ft lbs, then tighten the rear to 50 ft lbs.



3. Install the steering box bracket by loosening placing (1) 3/8x1.25" Grade 8 bolt with a flat washer through the pinch side of the brackets and loosely install another flat washer, lock washer and 3/8" nut.

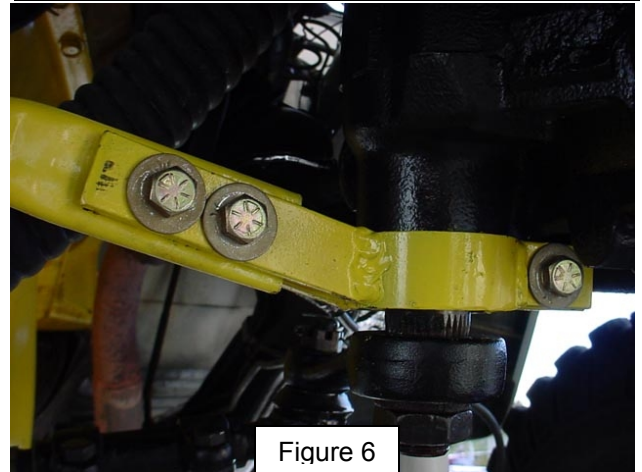
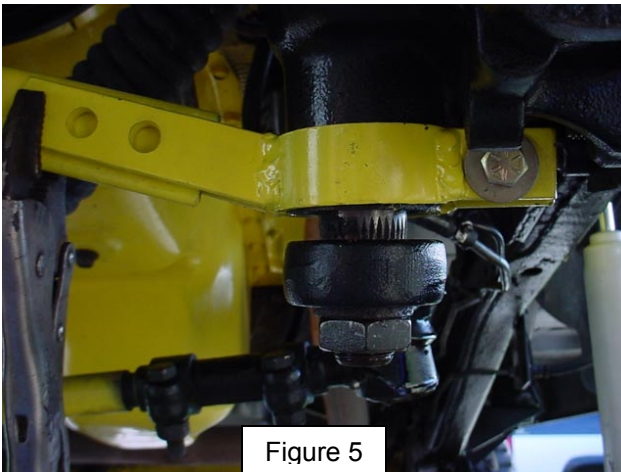
Slight adjustment to the tightness of the pinch bolt will aid in the ease of install
(Figure 4)



Installation of TT's FabWorks Steering Cross Brace

4. Align the bottom of the 2-piece clamp with the bottom lip of the steering box.
There is a cast support on the steering box that the pinch bolt will align with.
Using vice grip pliers or clamp, evenly secure the 2-piece clamp over the main support arm and mark the centers to drill 2 pilot holes. Enlarge holes to 3/8"
(FIGURE 5)

5. Place (2) 3/8x1.25" bolts with flat washers through the 2-piece steering box clamp and Main X Brace Support Arm and back them with (2) flat washers, (2) lock washers and (2) 3/8" nuts.
ENSURE THE BASE OF THE CLAMP IS EVEN WITH THE BASE OF THE STEERING BOX. Torque bolts to 50 ft lbs then Tighten the pinch bolt until the clamp ends touch. **(FIGURE 6)**



Your TT's FabWorks Steering X Brace is now installed!



If you have ANY questions at all... please contact me ASAP at ttsfabworks@cox.net

TT'S FABWORKS
The World of Full Size Jeep Custom Fabrications